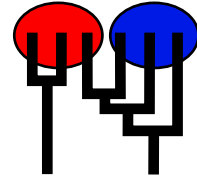


## Example: Microsatellite data set

MIGRATION RATE AND POPULATION SIZE ESTIMATION  
 using the coalescent and maximum likelihood or Bayesian inference  
 Migrate-n version 3.2.7 [1793]  
 Compiled for a PARALLEL COMPUTER ARCHITECTURE  
 One master and 2 compute nodes are available.  
 Compiled for a SYMMETRIC MULTIPROCESSORS  
 Program started at Wed Jan 12 16:51:18 2011  
 Program finished at Wed Jan 12 16:51:55 2011



### Options

Datatype: Microsatellite data [Brownian motion]  
 Missing data: not included

Inheritance scalers in use for Thetas: 1.00 1.00  
 1.00 1.00 1.00 1.00 1.00  
 1.00 1.00 1.00

[Each Theta uses the (true) inheritance scalar of the first locus as a reference]

Random number seed: (from parmfile) 310705631

Start parameters:

Theta values were generated RANDOM start value from U(min,msx)

M values were generated from the FST-calculation

Connection type matrix:  
 where m = average (average over a group of Thetas or M,  
 s = symmetric M, S = symmetric 4Nm, 0 = zero, and not estimated,  
 \* = free to vary, Thetas are on diagonal

Population	1	1
1 population__num	*	*
1 population__num	*	*

Order of parameters:  
 1  $\Theta_1$  <displayed>

Mutation rate among loci:

Mutation rate is constant for all loci

Analysis strategy:

Bayesian inference

Proposal distributions for parameter

Parameter	Proposal
Theta	Slice sampling
M	Slice sampling

Prior distribution for parameter

Parameter	Prior	Minimum	Mean*	Maximum	Delta	Bins
Theta	Uniform	0.000000	10.000000	20.000000	2.000000	500
M	Uniform	0.000000	10.000000	20.000000	2.000000	500

Markov chain settings:

Long chain

Number of chains	1
Recorded steps [a]	500
Increment (record every x step [b])	20
Number of concurrent chains (replicates) [c]	2
Visited (sampled) parameter values [a*b*c]	20000
Number of discard trees per chain (burn-in)	10000

Multiple Markov chains:

Static heating scheme

4 chains with temperatures
1000000.00      3.00      1.50      1.00
Swapping interval is 1

Print options:

Data file:	infile.msat
Output file:	outfile-bayes
Posterior distribution raw histogram file:	bayesfile
Print data:	No
Print genealogies [only some for some data type]:	None

## *Data summary*

Datatype: Microsatellite data  
 Number of loci: 10

Population	Locus	Gene copies data	(missing)
1 population__number__0	1	50	(0)
	2	50	(0)
	3	50	(0)
	4	50	(0)
	5	50	(0)
	6	50	(0)
	7	50	(0)
	8	50	(0)
	9	50	(0)
	10	50	(0)
1 population__number__1	1	42	(0)
	2	42	(0)
	3	42	(0)
	4	42	(0)
	5	42	(0)
	6	42	(0)
	7	42	(0)
	8	42	(0)
	9	42	(0)
	10	42	(0)
Total of all populations	1	92	(0)
	2	92	(0)
	3	92	(0)
	4	92	(0)
	5	92	(0)
	6	92	(0)
	7	92	(0)
	8	92	(0)
	9	92	(0)
	10	92	(0)

*Allele frequency spectra*

## Locus 1

Allele	Pop1	Pop2	All
16	0.196	0.000	0.098
19	0.054	0.000	0.027
18	0.087	0.000	0.043
15	0.130	0.000	0.065
21	0.087	0.000	0.043
23	0.065	0.000	0.033
17	0.196	0.000	0.098
22	0.087	0.000	0.043
25	0.043	0.000	0.022
24	0.011	0.000	0.005
26	0.011	0.000	0.005
27	0.022	0.000	0.011
29	0.011	0.000	0.005

## Locus 2

Allele	Pop1	Pop2	All
16	0.543	0.000	0.272
19	0.022	0.000	0.011
18	0.174	0.000	0.087
17	0.163	0.000	0.082
15	0.011	0.000	0.005
21	0.043	0.000	0.022
20	0.022	0.000	0.011
22	0.022	0.000	0.011

## Locus 3

Allele	Pop1	Pop2	All
19	0.250	0.000	0.125
20	0.370	0.000	0.185
18	0.087	0.000	0.043
21	0.207	0.000	0.103
22	0.087	0.000	0.043

## Locus 4

Allele	Pop1	Pop2	All
--------	------	------	-----

Allele	Pop1	Pop2	All
16	0.076	0.000	0.038
24	0.109	0.000	0.054
15	0.033	0.000	0.016
25	0.163	0.000	0.082
14	0.033	0.000	0.016
19	0.120	0.000	0.060
12	0.033	0.000	0.016
20	0.130	0.000	0.065
23	0.087	0.000	0.043
28	0.011	0.000	0.005
22	0.043	0.000	0.022
21	0.141	0.000	0.071
13	0.011	0.000	0.005
26	0.011	0.000	0.005

## Locus 5

Allele	Pop1	Pop2	All
20	0.457	0.000	0.228
21	0.391	0.000	0.196
19	0.152	0.000	0.076

## Locus 6

Allele	Pop1	Pop2	All
19	0.033	0.000	0.016
20	0.065	0.000	0.033
18	0.261	0.000	0.130
22	0.163	0.000	0.082
21	0.283	0.000	0.141
16	0.033	0.000	0.016
24	0.109	0.000	0.054
17	0.054	0.000	0.027

## Locus 7

Allele	Pop1	Pop2	All
23	0.130	0.000	0.065
20	0.424	0.000	0.212
22	0.185	0.000	0.092
21	0.207	0.000	0.103
19	0.054	0.000	0.027

## Locus 8

Allele	Pop1	Pop2	All
19	0.522	0.000	0.261
17	0.043	0.000	0.022
18	0.087	0.000	0.043
20	0.163	0.000	0.082
16	0.043	0.000	0.022
22	0.076	0.000	0.038
15	0.033	0.000	0.016
23	0.033	0.000	0.016

## Locus 9

Allele	Pop1	Pop2	All
24	0.054	0.000	0.027
19	0.359	0.000	0.179
20	0.239	0.000	0.120
23	0.163	0.000	0.082
22	0.054	0.000	0.027
18	0.043	0.000	0.022
21	0.065	0.000	0.033
25	0.022	0.000	0.011

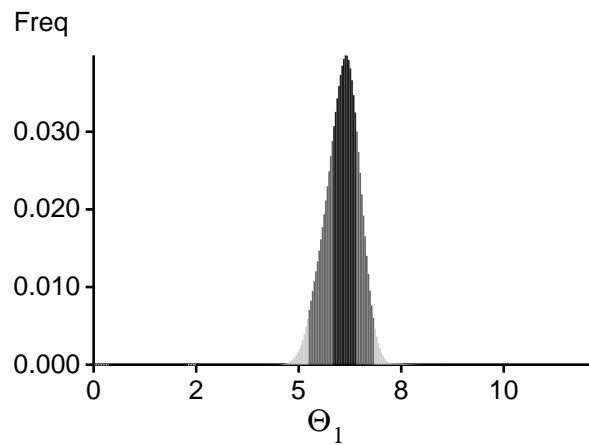
## Locus 10

Allele	Pop1	Pop2	All
22	0.152	0.000	0.076
20	0.337	0.000	0.168
23	0.120	0.000	0.060
24	0.011	0.000	0.005
19	0.163	0.000	0.082
21	0.054	0.000	0.027
18	0.043	0.000	0.022
15	0.043	0.000	0.022
17	0.043	0.000	0.022
25	0.033	0.000	0.016

## *Bayesian Analysis: Posterior distribution table*

Locus	Parameter	2.5%	25.0%	Mode	75.0%	97.5%	Median	Mean
1	$\Theta_1$	9.24000	10.44000	11.78000	13.56000	15.72000	13.50000	12.51716
2	$\Theta_1$	2.80000	3.80000	5.98000	7.12000	13.24000	6.58000	7.33761
3	$\Theta_1$	4.92000	7.04000	7.90000	9.20000	11.28000	8.14000	2.41386
4	$\Theta_1$	0.72000	1.04000	2.02000	3.00000	3.32000	4.82000	1.78259
5	$\Theta_1$	3.36000	4.32000	4.94000	5.84000	8.04000	5.34000	1.01963
6	$\Theta_1$	2.60000	4.40000	5.18000	6.16000	7.56000	5.22000	0.95042
7	$\Theta_1$	3.76000	5.24000	5.94000	6.92000	8.08000	6.02000	0.79825
8	$\Theta_1$	3.00000	4.12000	4.74000	5.32000	6.56000	4.82000	0.64158
9	$\Theta_1$	0.48000	0.68000	1.26000	1.80000	2.12000	5.26000	0.53929
10	$\Theta_1$	4.00000	7.84000	10.22000	11.84000	13.16000	10.42000	1.14241
All	$\Theta_1$	5.20000	5.80000	6.14000	6.40000	6.84000	6.14000	6.06364

*Bayesian Analysis: Posterior distribution over all loci*





## *Log-Probability of the data given the model (marginal likelihood)*

Use this value for Bayes factor calculations:

$BF = \text{Exp}[\ln(\text{Prob}(D \mid \text{thisModel}) - \ln(\text{Prob}(D \mid \text{otherModel}))]$

or as  $LBF = 2 (\ln(\text{Prob}(D \mid \text{thisModel}) - \ln(\text{Prob}(D \mid \text{otherModel})))$

shows the support for thisModel]

Locus	Raw thermodynamic score(1a)	Bezier approximation score(1b)	Harmonic mean(2)
1	-12144.04	-2047.98	-95.26
2	-3324.29	-610.17	-72.93
3	-1935.16	-391.12	-55.87
4	-9647.05	-1658.33	-91.96
5	-1399.59	-285.80	-42.86
6	-5159.64	-902.95	-56.91
7	-3662.34	-665.00	-50.84
8	-2864.08	-535.03	-42.83
9	-4425.61	-774.89	-63.73
10	-5289.34	-940.22	-84.80
All	-49930.44	-8890.78	-737.30

(1a, 1b and 2) is an approximation to the marginal likelihood, make sure the program run long enough!

(1a, 1b) and (2) should give a similar result, (2) is considered more crude than (1), but (1) needs heating with several well-spaced chains,

(1b) is using a Bezier-curve to get better approximations for runs with low number of heated chains

[Scaling factor = -79.311089

*Acceptance ratios for all parameters and the genealogies*

Parameter	Accepted changes	Ratio
$\Theta_1$	1001210/1001210	1.00000
Genealogies	133670/501030	0.26679

## *MCMC-Autocorrelation and Effective MCMC Sample Size*

Parameter	Autocorrelation	Effective Sample Size
$\Theta_1$	0.49501	10616.00
$\text{Ln}[\text{Prob}(D G)]$	0.92430	1027.32